

# HIGH EFFICIENCY RECESSED LED LUMINAIRE

CYFELCO REC-PNL-32W-5230LM-3000K-L60W60H75 1-10V

PRODUCT DATA



820-200



## General Information

Order Code	820-200
Product Description	CYFELCO REC-PNL-32W-5230LM-3000K-L60W60H75 1-10V
Application	Offices, shops, educational and public centres, etc.
Installation	Ceiling type exposed T-bar, plasterboard with accessories 590-001
Luminaire type	Recessed LED Luminaire
Light Source	LED modules SMD Vossloh-Schwabe
Number of light sources	2 pcs
Light Source Colour	3000K, warm white
Driver	Built-in Vossloh-Schwabe
Dimming	1-10V
Energy Class	A++
Optical Risk	RG 0
Protection class	Class I
Ingress protection code	IP 20 [Finger-protected]
Mechanical impact protection code	IK03
Standards	2014/30/EU Electromagnetic Compatibility Directive 2014/35/EU Low Voltage Directive
CE mark	Yes
Warranty	5 years

## Electrical Data

Input Power	36 W
Input voltage	220-240V
Input Frequency	50-60 Hz
Drive Current	350 mA
Power Factor	0.97

## Mechanical Characteristics

Housing Material	Sheet steel 0,5mm
Surface Finish	White powder coating (RAL 9003)
Optical Cover	Opal PMMA

## Initial Performance

Source Luminous Flux	5230 lm
Source Efficacy	162 lm/W
Initial Luminaire Luminous Flux	3975 lm
Initial Luminaire Efficacy	111 lm/W
Initial Corr. Colour Temperature (CCT)	3000 K
Initial Color Rendering Index (CRI)	>80 (Typ. 85)
Initial chromaticity	SDCM < 3

## Logistics

Net weight per piece	4.04 kg
Gross weight per piece	4.61 kg
Volume	0.33 m <sup>3</sup>
Packing	1 pc per carton

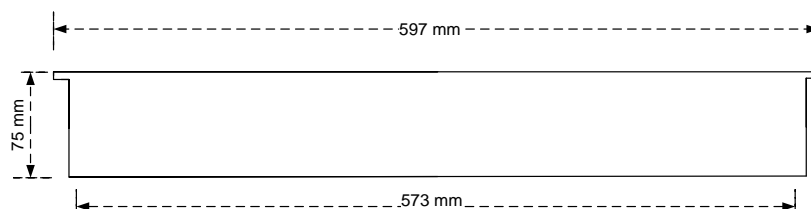
## Over Time Performance

Driver Service Life Time	100,000 hrs
LED Median Useful Life L80B10	60,000 hours

## Application Conditions

Operating Temperature Range	-20 to +40 °C
Average Ambient Temperature	+25 °C

## Dimensional Drawing



ELMASCO INDUSTRIES S.A.

Head Office : 44 K. Palama, 14343 N. Chalkidona, Athens, Greece

Production Plant : Ag. Adrianos, 21100 Nafplio, Greece

Email: elmasco@elmasco.eu

Tel : +30 210 2583100

Fax: +30 210 2583107

